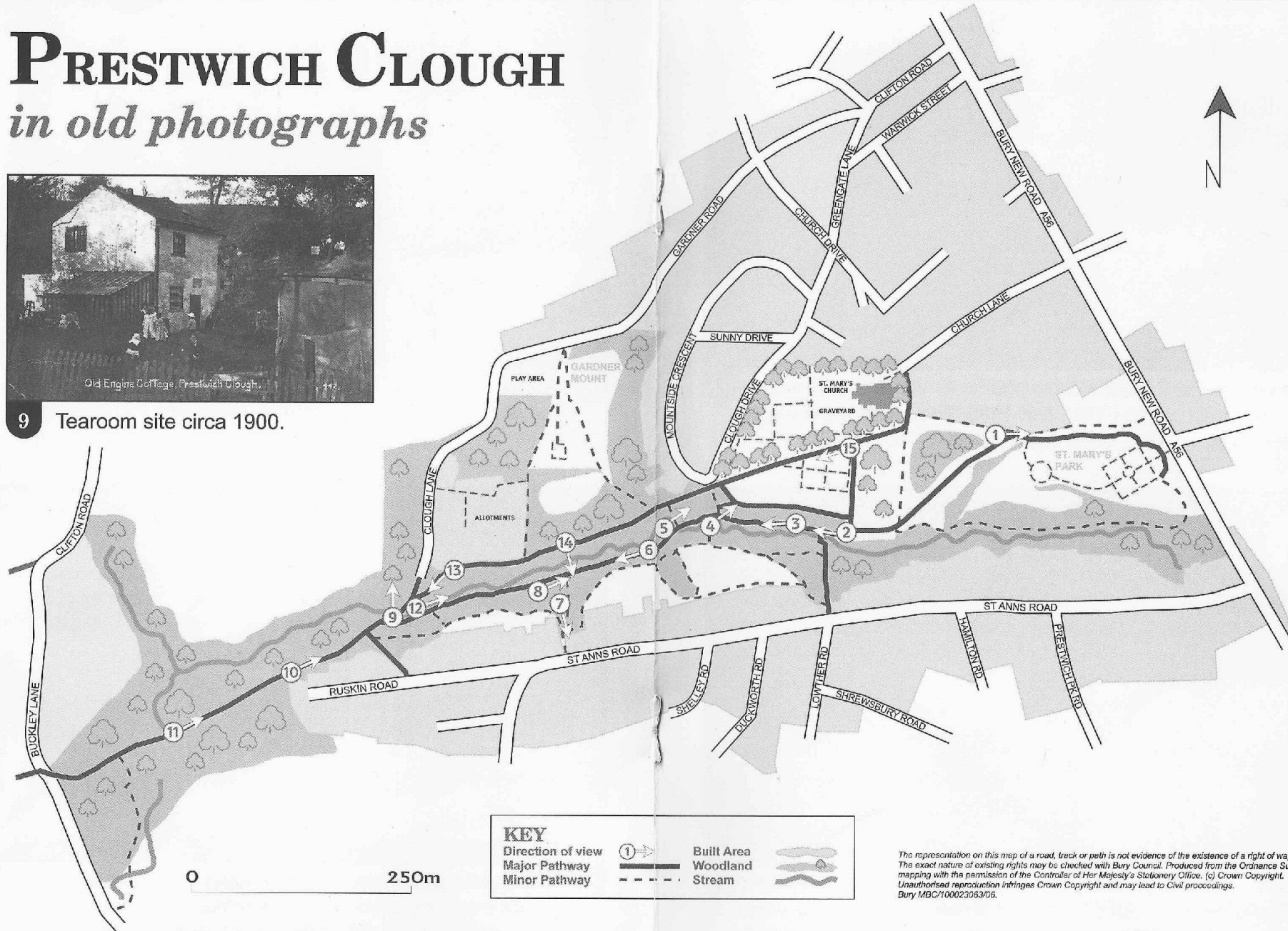


# PRESTWICH CLOUGH

## *in old photographs*



9 Tearoom site circa 1900.



# Introduction

On the following pages you will find views of Prestwich Clough taken between 1900 and the 1930's.

They illustrate that at this time the Clough had far less trees, was in a basically rural setting and was a popular recreational site in the days prior to television and computers.

The majority of the pictures are old post cards, some of which had postage franks, giving us a latest possible date.

They are also dated on our knowledge of when certain features were built, maturity of the shrubs and trees planted not long after the opening of the Clough in 1906 as a public park and using other old pictures not shown within this booklet for comparison.



1 Looking towards St Mary's Flower Park, prior to the construction of the bowling green circa 1900.



2 The entrance to the Clough below the churchyard cobbled path. One of the stone gate posts can still be found at the bottom of the steps, also illustrating the fact that the bridge has moved.



3 The Clough showing the groundsman and his hut around 1910.





4 This picture can be dated to around 1930 as the lower graveyard has now been enclosed by metal railings.



6 A view down the Clough. The slope below Gardner Mount on the right. Date unknown.



5 This view was probably taken in the early 1920's as the rhododendrons are well established but the lower graveyard has yet to be enclosed. The front cover is an earlier picture of the same view.



7 The Bandstand not long after completion circa 1910.



8 A view of the Bandstand site prior to its construction probably some time between 1900 and 1906. The oak that the people are sitting under is still present today.



10 A view towards Gardner Mount, with the old Engine Cottage that pre-dated the tearooms still present circa 1900.

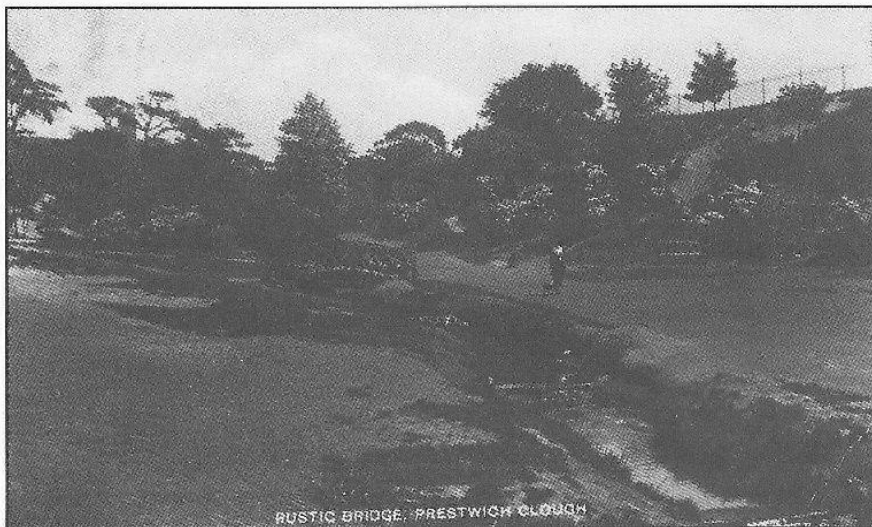


9 The Tearooms probably not long after completion circa 1910. The tall man smoking his pipe is Mr Grimshaw, whose wife, Margaret, ran the tearooms up to her death in 1971, aged 91.



11 What is known locally as the beech mound or Buckleys Plantation. The Buckley family lived at the house called 'Prestwich Clough' behind the wall on the right.





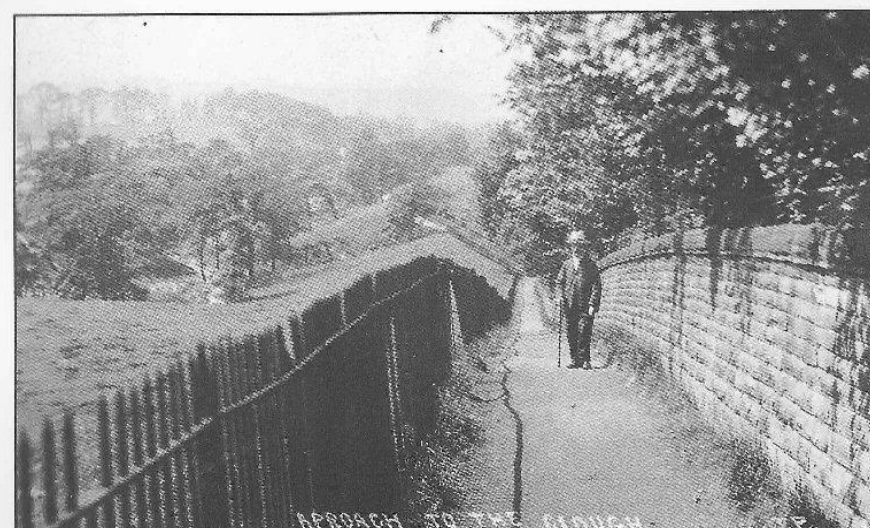
**12** A 1920's view, note the maturing rhododendrons planted around 1910 and the lack of any houses on Ruskin Road. The rustic bridge was in the place when the Clough was opened in 1906.



**13** An early view of the tearooms. The large oak in the foreground is still present today.



**14** Opening Ceremony of the Bandstand, viewed from the footpath below Gardner Mount.



**15** This picture taken around 1905 shows the stone boundary wall to St. Mary's churchyard, erected in 1886. The land beyond the iron railings was enclosed and consecrated as a burial ground in 1925.